

Create a PDF Form for VCL

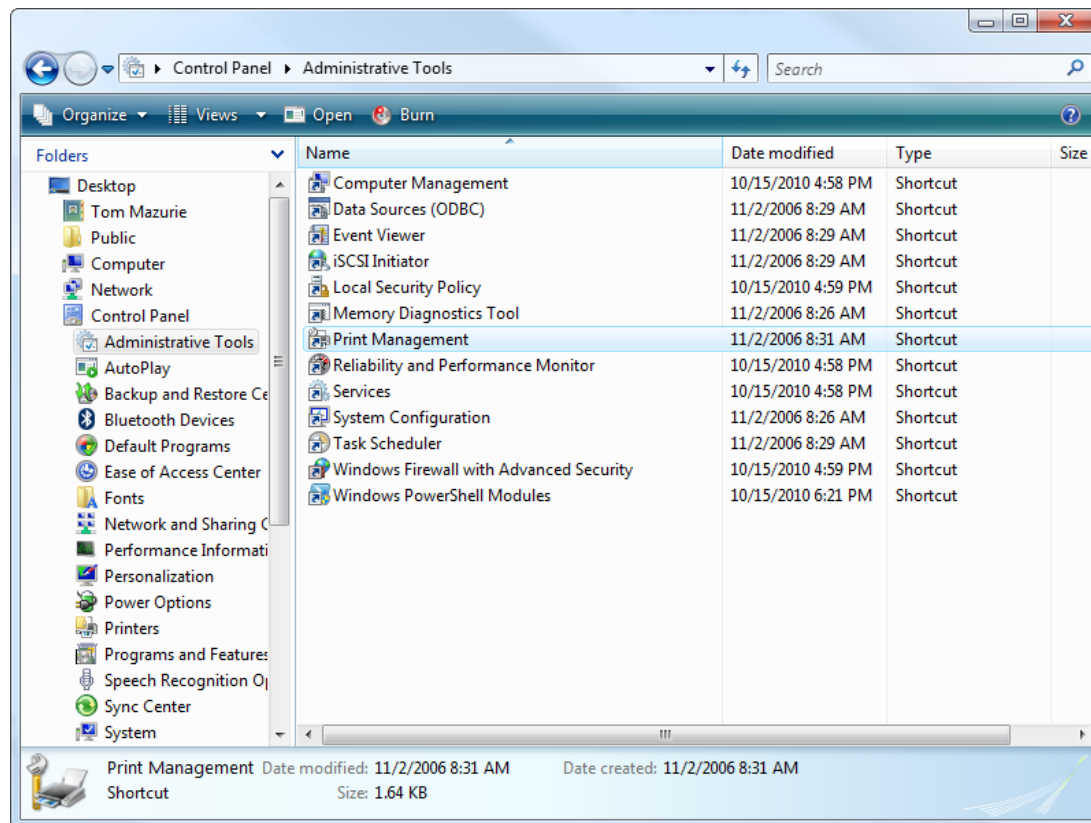
Overview

This User Note describes how to create a printer FORM that can be used with the CutePDF Writer or other PDF print driver to print VCL algorithms as PDF files from the VCL program. The created form is resident to the machine it is created on. These steps are for use on PCs running versions of Windows Vista and later.

NOTE: It is a good idea to perform these steps while logged into the Administrator account on your local machine.

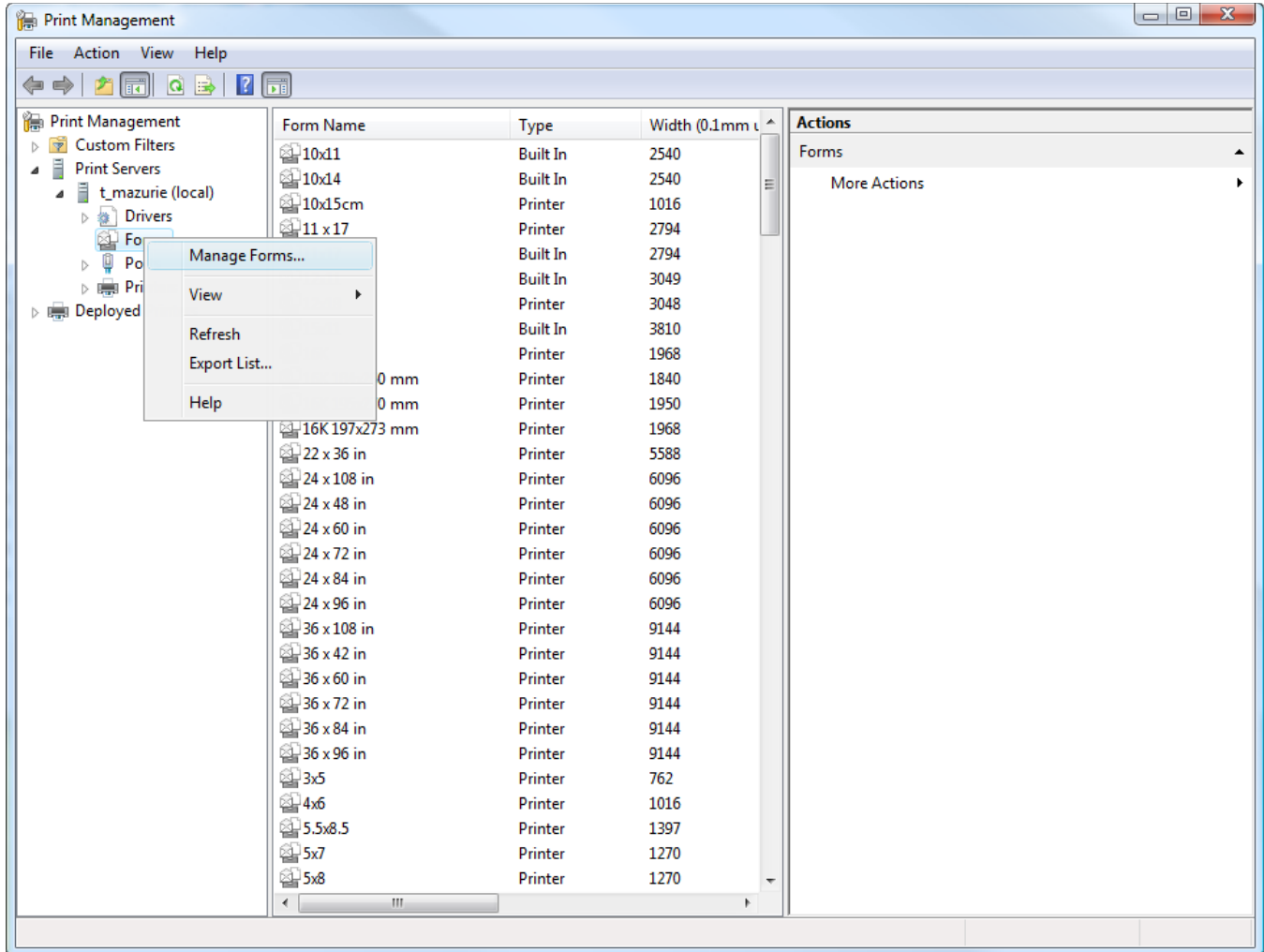
Creating the Form

1. Open the Control Panel (Start>Control Panel).
2. Double-click on “Administrative Tools”.



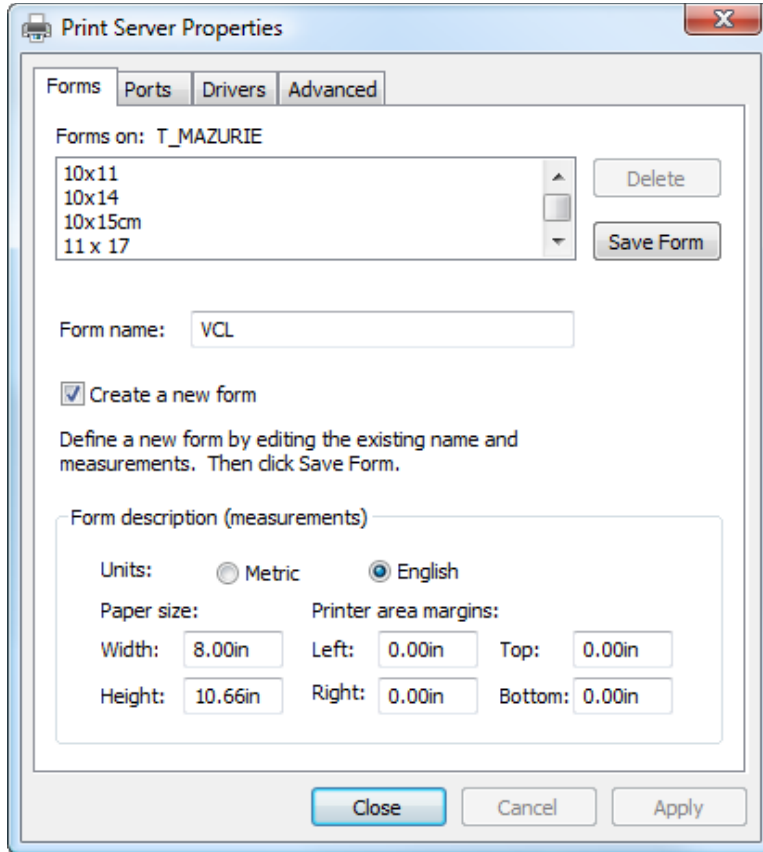
3. Select “Print Management”.

VCL PDF FORM



4. Expand "Print Servers" under the Computer Name (e.g., t_mazurie (local)).
5. Right-click on "Forms" and click "Manage Forms...".

VCL PDF FORM

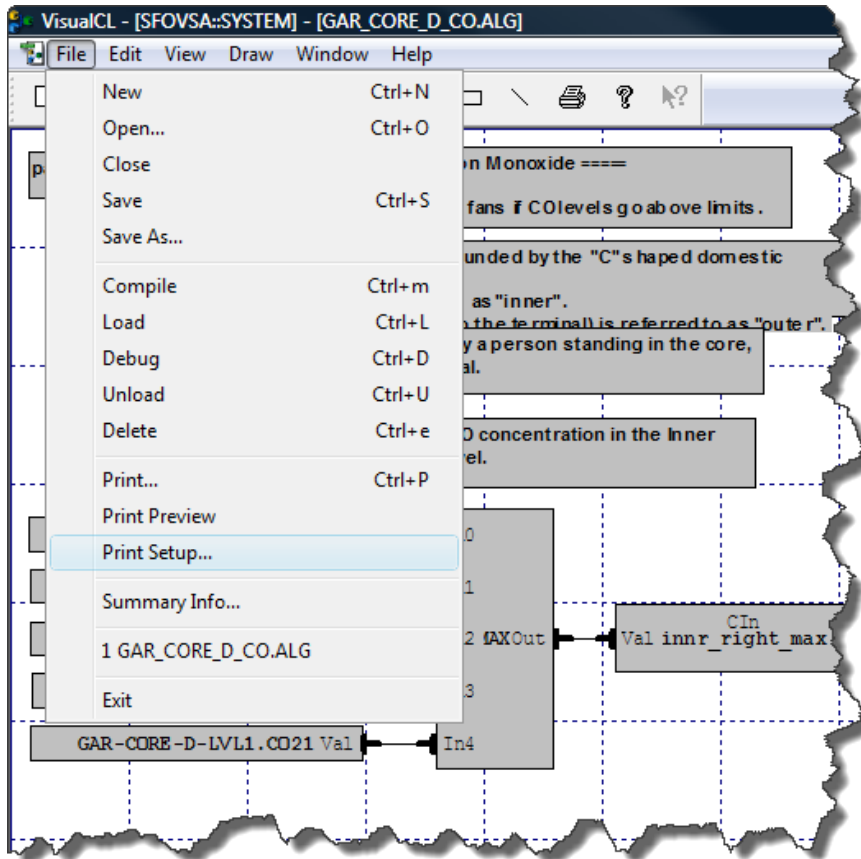


6. Checkmark "Create a new form".
7. For the Form name, change the text to **VCL**.
8. Under **Form description (measurements)**, set the width to 8.0 and the height to 10.66.
9. Click **[Close]** to finish.

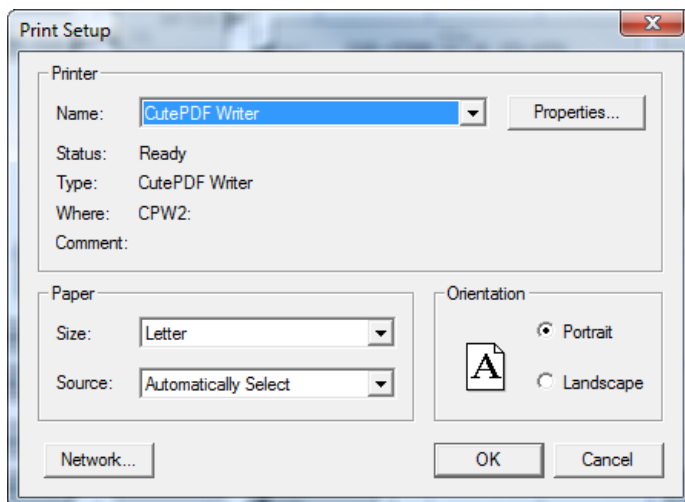
You now have a form named **VCL** saved on your local machine. It can be used with any printer, including the CutePDF Writer.

Using the Form in VCL

1. Run the PC version of VCL.

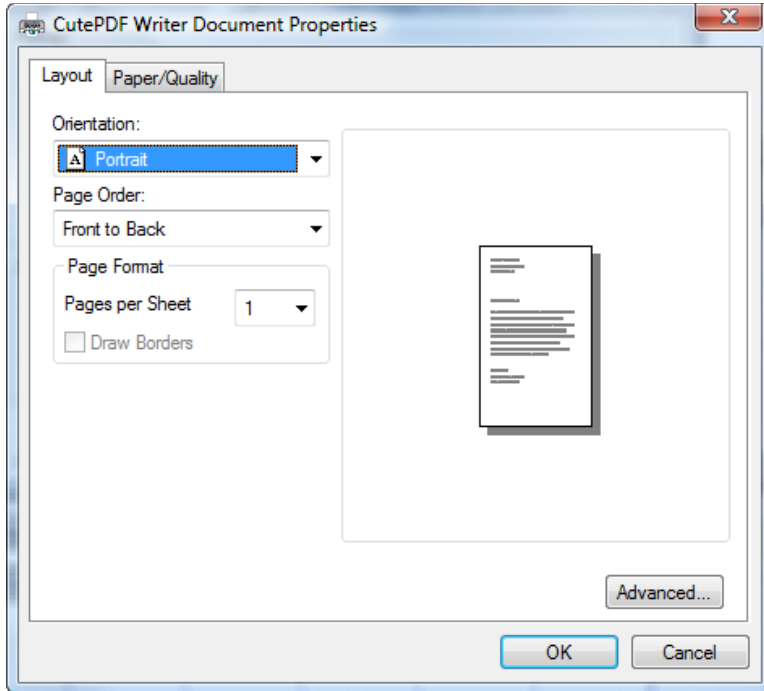


2. From the **File** menu, select **Print Setup....**

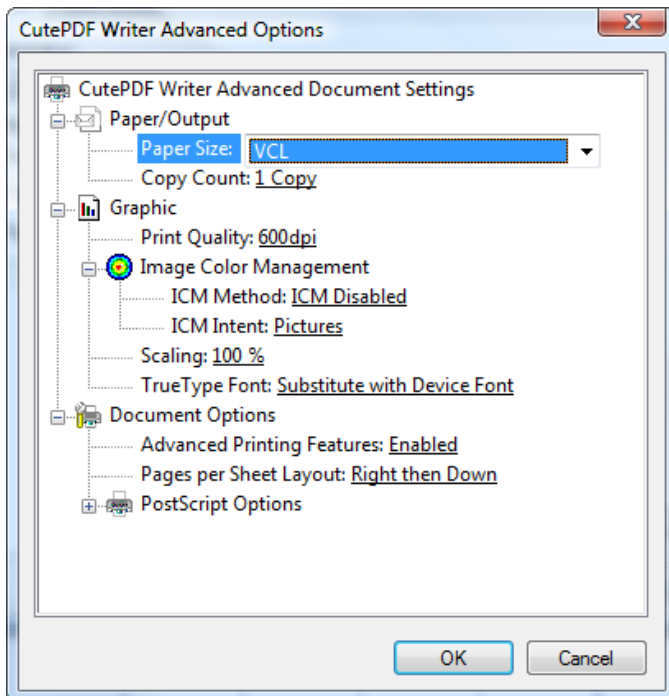


3. From the Print Setup dialog box, select "CutePDF Writer" and click "Properties...".

VCL PDF FORM



4. Click "Advanced...".



5. In the CutePDF Writer Advanced Document Settings dialog box, select the VCL form name from the Paper Size drop-down menu.
6. Click **[OK]** (three times) to return to the VCL screen.